

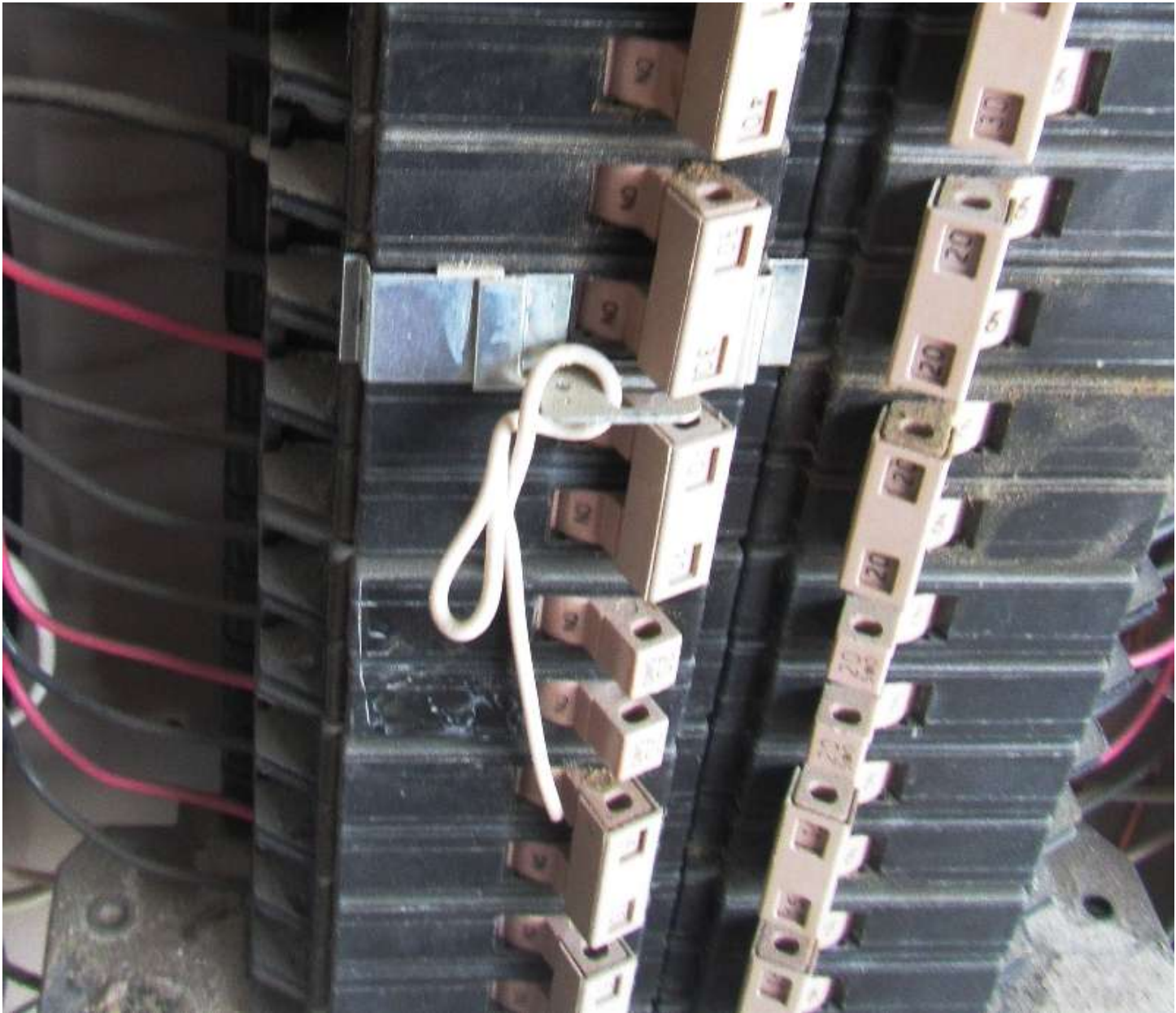
The Rules of Repair



Rule #1

Never trust someone else's troubleshooting.
Start at ground zero every time.



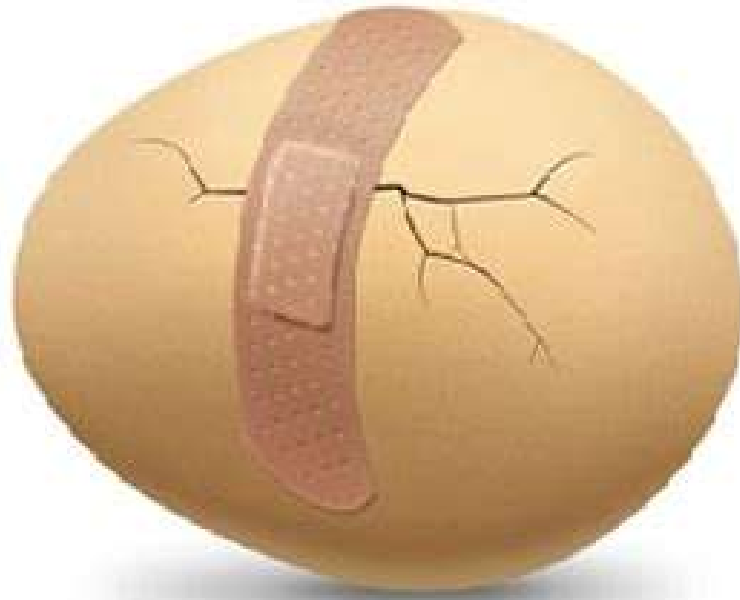






Rule #2

Band-Aid fixes always come back. Always.





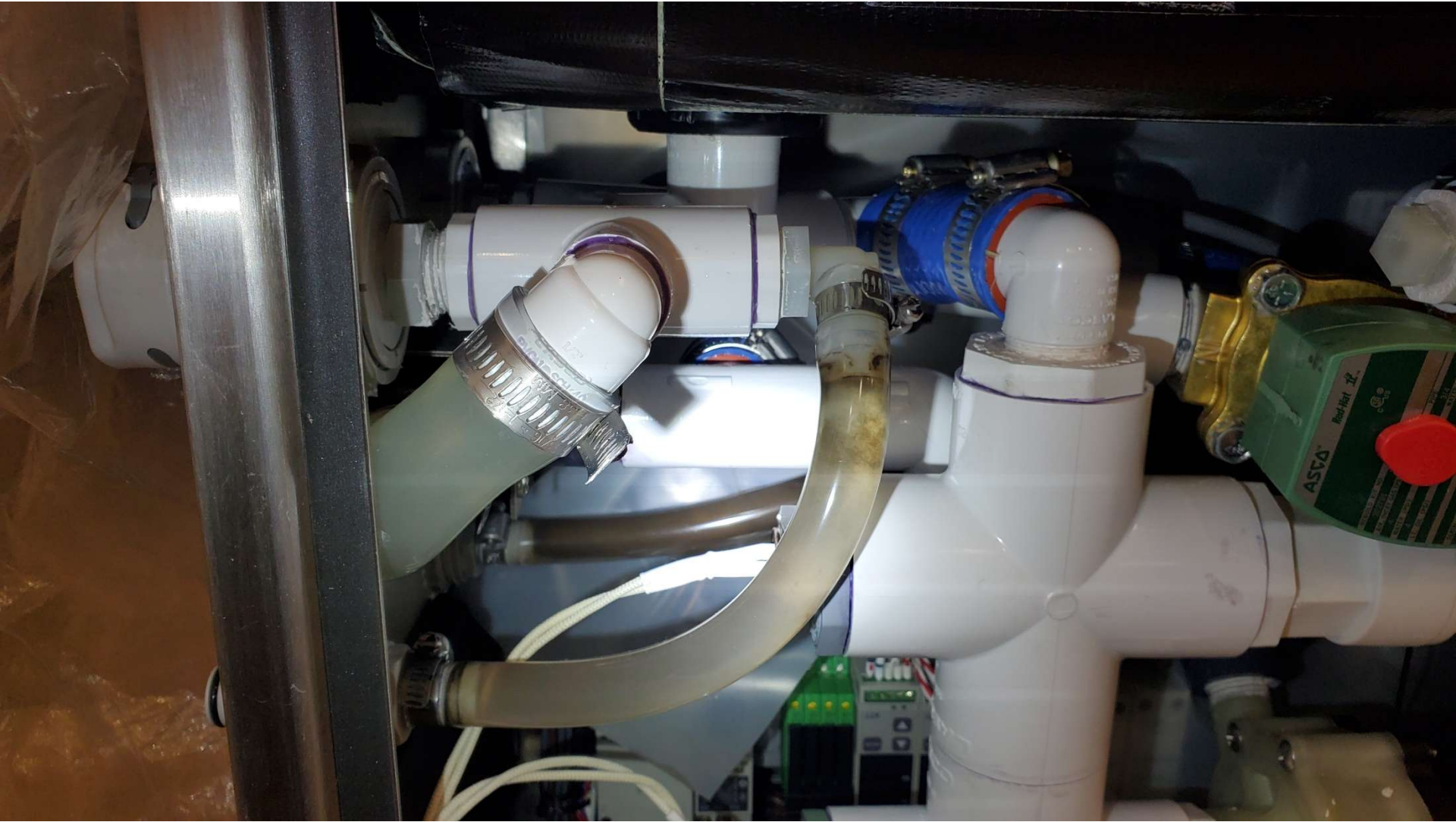


Rule #3

If it happens to one
then it will happen to more.

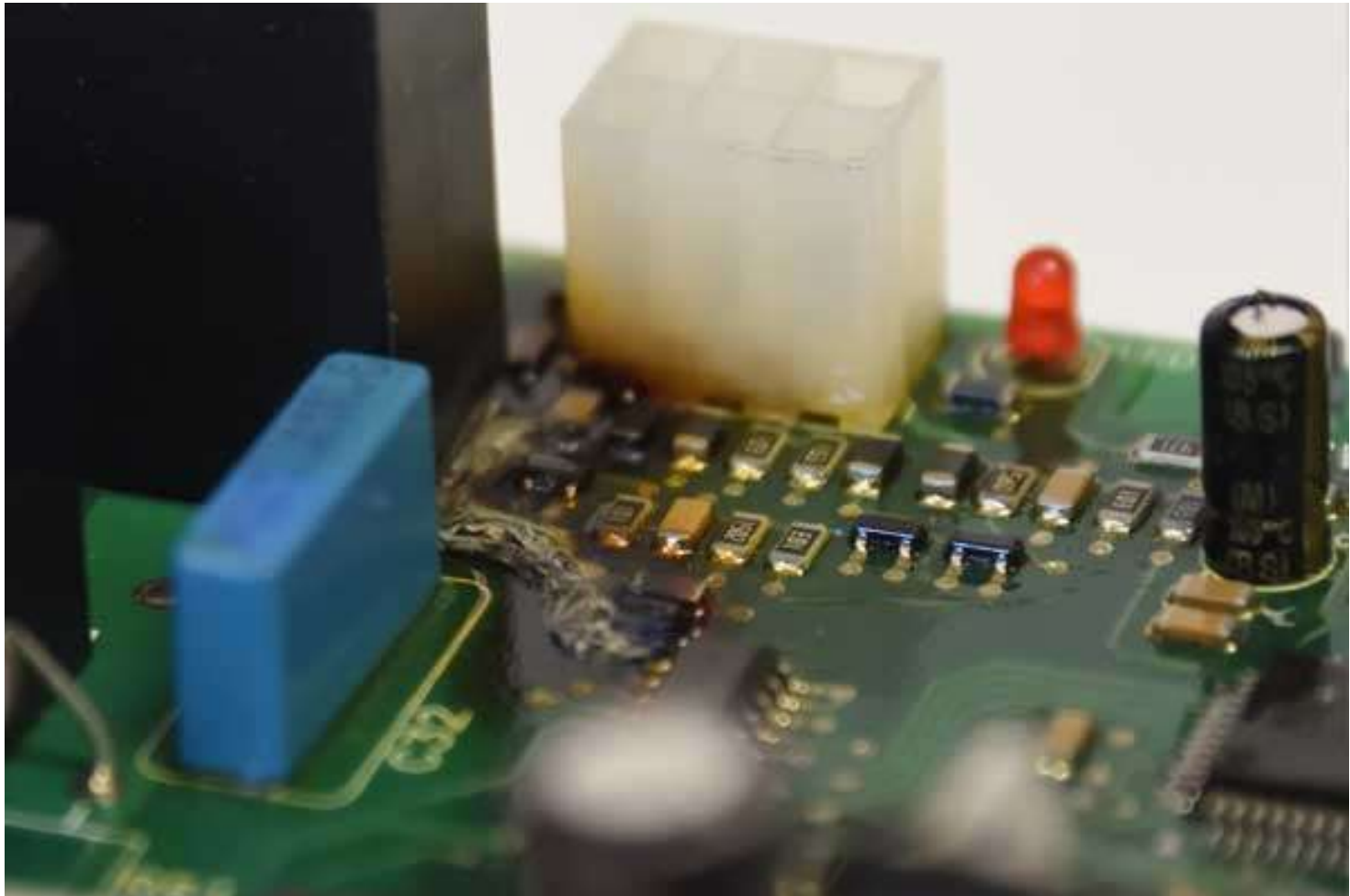




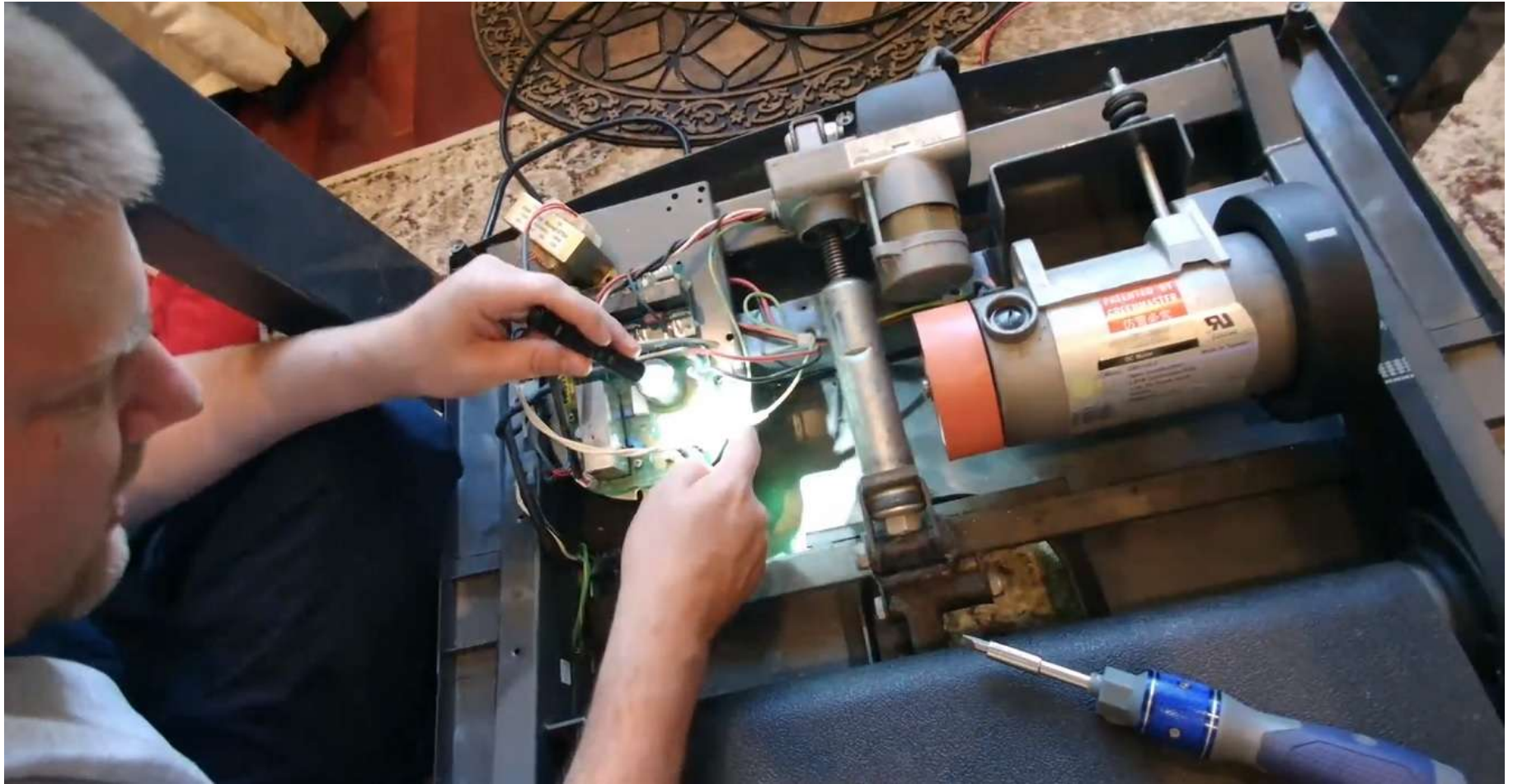


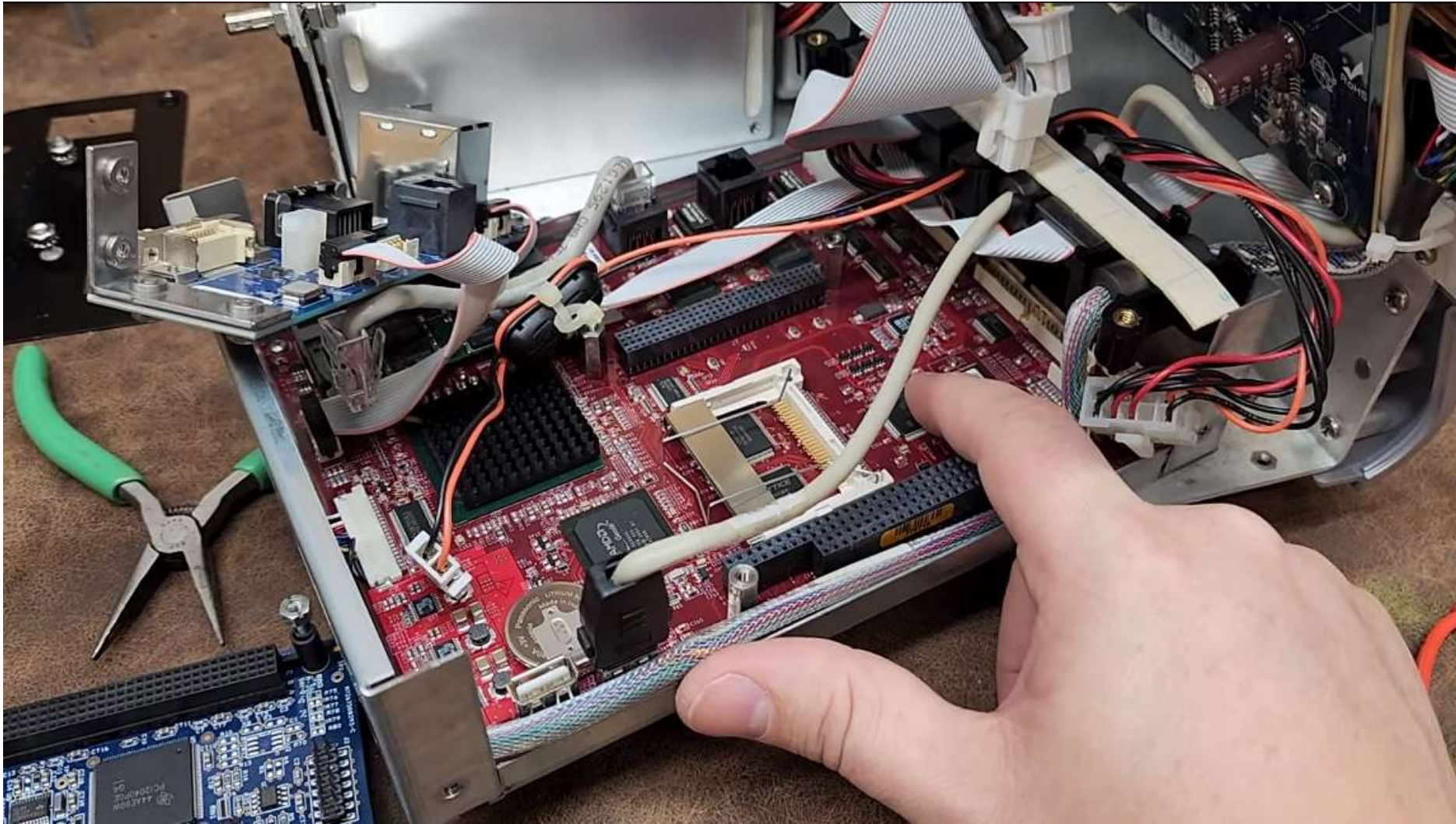
Rule #4

It was already broken. Time permitting, every repair should be treated as a time to experiment and explore the malfunction to improve your skills and prevent failure in other equipment.









Rule #5

If you touch it, you own it. Every mishap involving that device thereafter, can and will be blamed on the repair technician.



Rule #6

If you don't know the answer, consult another source of information.



Consider the Source



Read Thoroughly



**Check the Author,
Date & Sources**



Ask the Experts



Search



Home



My Network



Jobs



Messaging



Notifications



Me



Work



Learning

PREMIUM



Justin Barbour

Better Biomed YouTube Channel
(Don't Be Shy, Click The Connect Button!)

Analytics & tools

13,531 post impressions

See your Premium features

My items

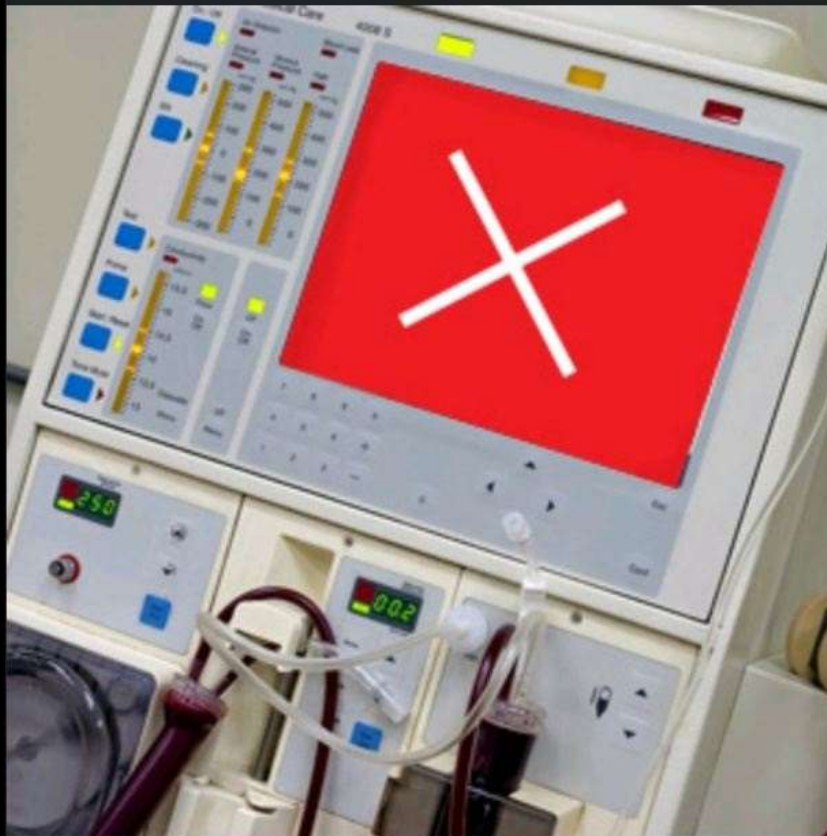
Be the first to react



Hamidsha Shahudeen • 1st

Medical Equipment Planner | Biomedical Consultant
18m •

The majority of operational and technical problems on Medical Equipment are usually not well articulated by the end users. Thus, we Biomedical Engineers spend a lot of time to figure out the exact problem on the medical devices before ...see more



6



Like

Comment

Repost

Send

Ad

LinkedIn Member, stay informed on industry news and trends



LinkedIn Member, you might like to follow **NIPPON EXPRESS GROUP**

Follow

About Accessibility Help Center

Privacy & Terms Ad Choices

Advertising Business Services

Get the LinkedIn app More

LinkedIn LinkedIn Corporation © 2023

4
Replies

Won't fire, no error code. Updated Mar 22 2023

Can't get the triad to activate in standard mode for both Mono and Bip. Tried demo mode, same issue. When an attempt is made to fire, the unit gives a short beep instead of normal tone, but no error code. However the unit does fire in debug mode. Issue with test equipment can be eliminated as it was used to test on another unit. Appears to be a programming issue? Is there reset or fix for this?



RE: Valleylab - ForceTriad

1
Reply

Serives manual Updated Mar 22 2023

I need a maintenance manual
Equipment: My lab 50



RE: Esaote - My Lab 50

0
Replies

Error 42 internal Added Mar 22 2023

What is the causes of error 42 internal for this photometer 5010
Equipment: Photometer 5010

0
Replies

Suction tube Added Mar 22 2023

Where can I find the suction tube connected and around the rotor
Equipment: BioSystems - BTS 310

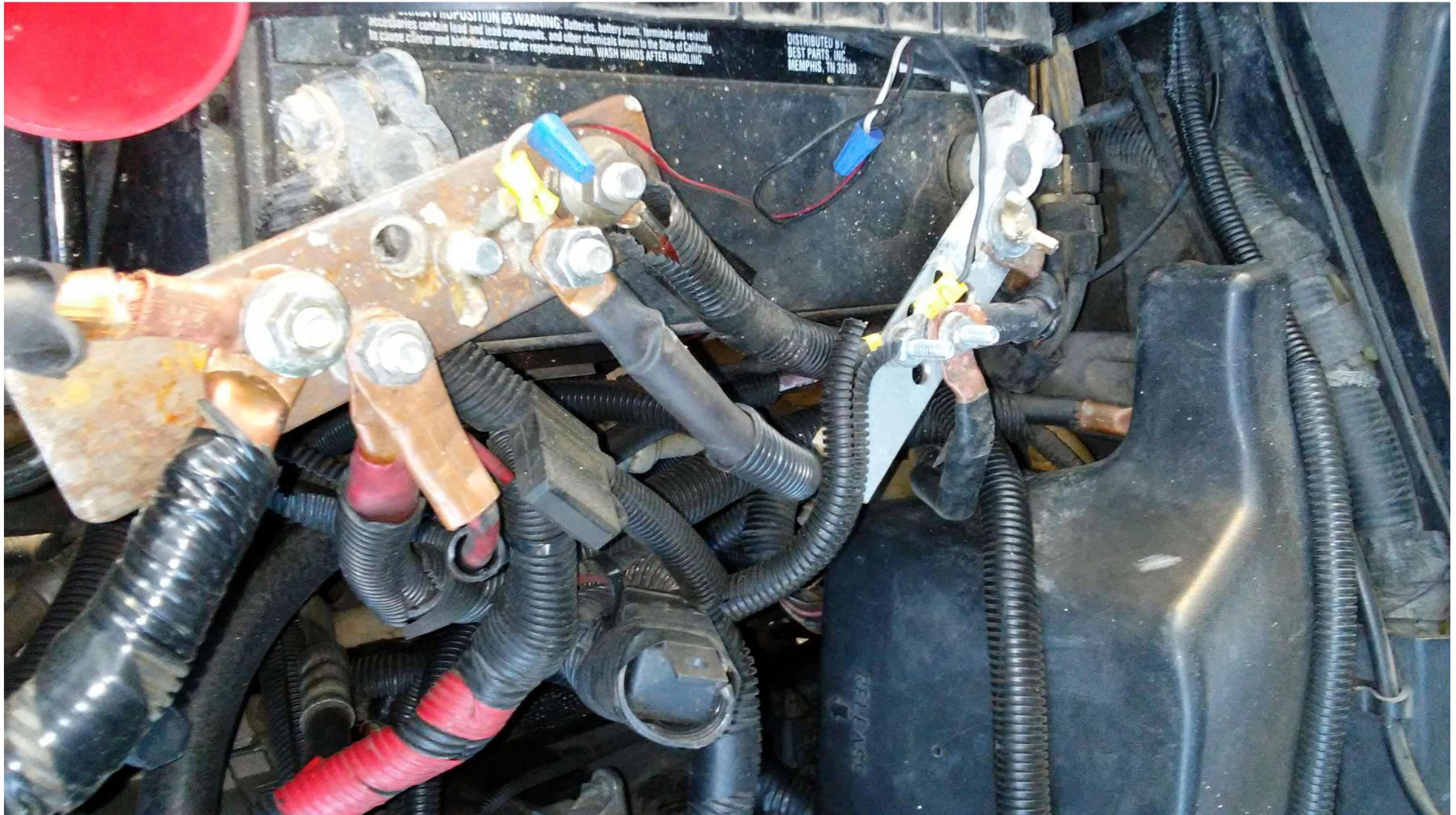
Rule #7

Image is everything. Your reputation is only as good as your last repair.



Rule #8

If you don't have enough time to fix it right the first time, you'll have plenty of time to fix it right the second time.



Rule #9

Eliminate the predictable failures
because the unpredictable will still happen.



Rule #9

Eliminate the predictable failures
because the unpredictable will still happen.



Rule #9

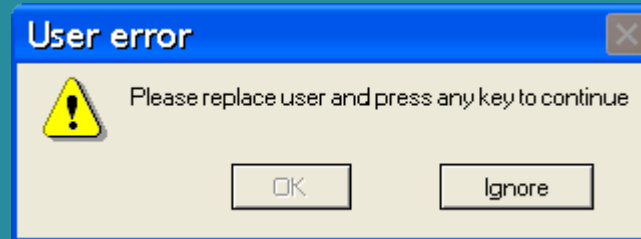
Eliminate the predictable failures
because the unpredictable will still happen.



Rule #10

Sometimes the only thing broken is the user.
Try to fix the user to prevent future damage.

We Fix People Too!



User error: Replace the user and try again.

