



Overview of TMS Online and Data Insights





Mike Myers

Sr. Solutions Consultant



Rick Joslin

TMS Product Manager



Mark Claffey

Solutions Consultant



AGENDA

TMS Solution

- **About Accruent**
- **TMS Overview**
- **New Features**
- **TMS Roadmap**
- **Data Insights**
- **Questions**



About Accruent



Intelligence for the Built Environment

Founded 1995

In 150+ Countries

Over 10K Customers

\$6.6 B  **FORTIVE** Revenue

10.8 Years Average Customer Retention

Headquarters - Austin, TX



WHY ACCRUENT FOR HEALTHCARE?

EXPERIENCE

1,000 TMS customers



EXPERTISE

Subject Matter Experts



Rick Joslin
Senior Advisor, Strategy
Facilities Thought Leader



Mike Myers
Senior Solutions Consultant
HTM Solutions Expert

VISION

Industry Leadership



Business
Discovery



Thought
Leadership



Business
Reviews



Customer
Partner

ABILITY

Partner Network





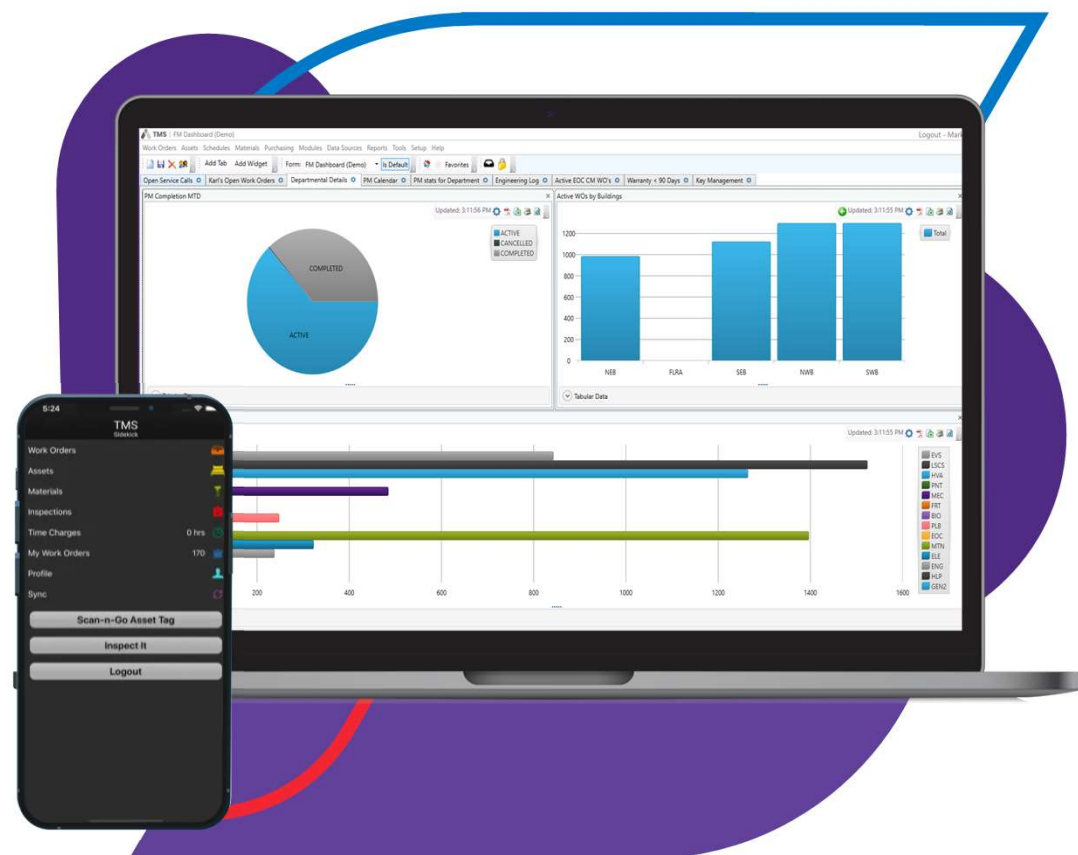
TMS Overview

TMS CMMS VALUE

Transformative CMMS & Asset Management
Designed Exclusively For Healthcare

A modern, cloud-based, silo-busting solution. Consolidate HTM, HFM, and IT to a single user experience to transform the patient experience.

- Extend asset life and minimize downtime with predictive work orders, repair/replace analysis, and smart automation.
- Build automation workflows and report creation.
- Modernize the way technicians want to work with browser agnostic mobile capabilities.
- Streamline and optimize requests, equipment distribution and workflow for all departments of hospital operations.
- Identify potential security risks on connected devices.
- Leverage native analytics for insights and better business decisions.
- Optimize & automate processes with flexible integrations built on secure APIs.



292 million
work orders

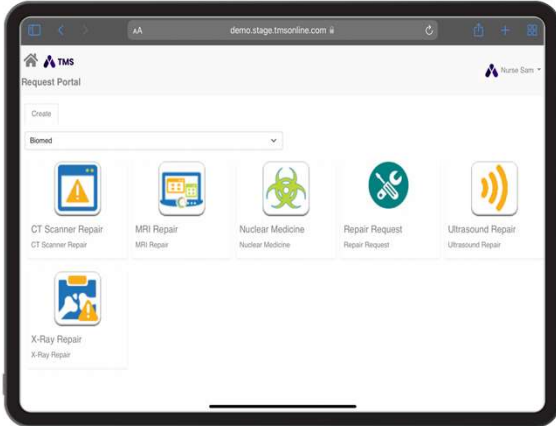
17 million
managed assets

754 thousand
managed technicians

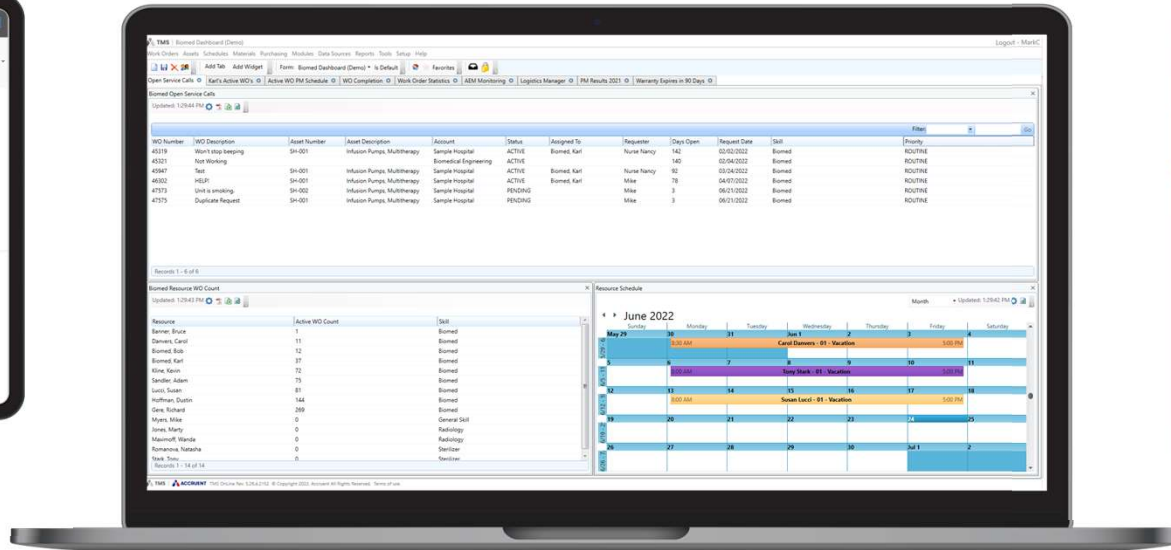
191 thousand
buildings managed

TMS Online

 **TMS Request Portal**
Service Requester



 **TMS**
Managers/Administrators/Technicians



 **TMS Sidekick**
Technician



Demo Here



New Features



New Features

ServiceNow Integration

Info + Cyber Security Integration

TJC PM Compliance

WorkOrders
GET /api/work-orders/{segmentName}-{itemIdentifier} Get the WorkOrder instance looking for its Segment Name and Work Order Number.
Assets
GET /api/assets/{segmentName}-{itemIdentifier} Get the Asset instance looking for its Segment Name and Item Identifier.
TimeCharges
GET /api/time-charges/{timeChargeNumber} Get the TimeCharge instance looking for its Segment Name and Item Identifier.
PUT /api/time-charges/{timeChargeNumber} Executes an Update operation on a specific TimeCharge record.
PATCH /api/time-charges/{timeChargeNumber} Updates the TimeCharge with specific properties.
GET /api/time-charges/{segmentName}-{itemIdentifier} Get the TimeCharge instance looking for its Segment Name and Item Identifier.
POST /api/time-charges/query Executes a Query for ALL data and returns the data.
POST /api/time-charges/{segmentName} Create a new TimeCharge in the specified Segment.
POST /api/time-charges/array/{segmentName} Create new TimeCharges in the specified Segment.
DELETE /api/time-charges Delete the specified TimeCharge.

Assets Master (TMS Enterprise) Asset: AC-01

Info Security

- Operating System Name
- Remote Access Type
- Application Entity Title (AET)
- Unique Device Identifier (UDI)
- Operating System Major Version Number
- Operating System Minor Version Number
- Operating System Build Number

External References

External System Name	External Item Identifier
SNOW-001-1238	
MED-025-AC-01	
Stanley Aeroscout	SAE-01-CH-AC-01

Network Adapter Information

MAC Address	IP Address	Network Adapter Type	Connection Status Type
00-30-F1-35-27-38	192.168.1.8	LAN - Wired Lan	JLA Corp CST 01 - Corporate Connect

iService Homepage

Top IT Requests - Quick Access

- IT Request (Work Order)
- IT Change User Access
- Hardware Request
- Connectivity/Connect User Access
- Cancel Order Entered in Error

TMS Request Portal

Request Types:

- Carpentry Repair
- Electrical or Lights Out
- Floor Repair
- Hot or Cold Temperature Call
- IT Service Request
- MMR/Office Supply Requests
- Painting, Ceiling, or Wall Repairs
- Patient Transport Request
- Plumbing Issue
- Restroom Cleaning
- Television Repair (Patient Rooms)
- Tube Station

Session Timeout



TMS Roadmap

SAFE HARBOR STATEMENT

We may make statements regarding planned or future development for our existing or new products and services. These statements are not intended to be a promise or guarantee of future availability of products, services or features but merely reflect our current plans and based on factors currently known to us. These planned and future development efforts may change without notice. Purchasing decisions should not be made based upon reliance on these statements.

These statements are being made as of April 2023, and we assume no obligation to update these forward-looking statements to reflect events that occur or circumstances that exist or change after the date on which they were made. If this presentation is reviewed after the above date, these statements may no longer contain current or accurate information.

TMS ONGOING PROJECTS

ROADMAP

- Modern, best-in-class user experience based on persona workflows
- Native mobile application with offline capabilities for technicians.
- Strengthen REST APIs for customer and partner consumption.

IN QUEUE

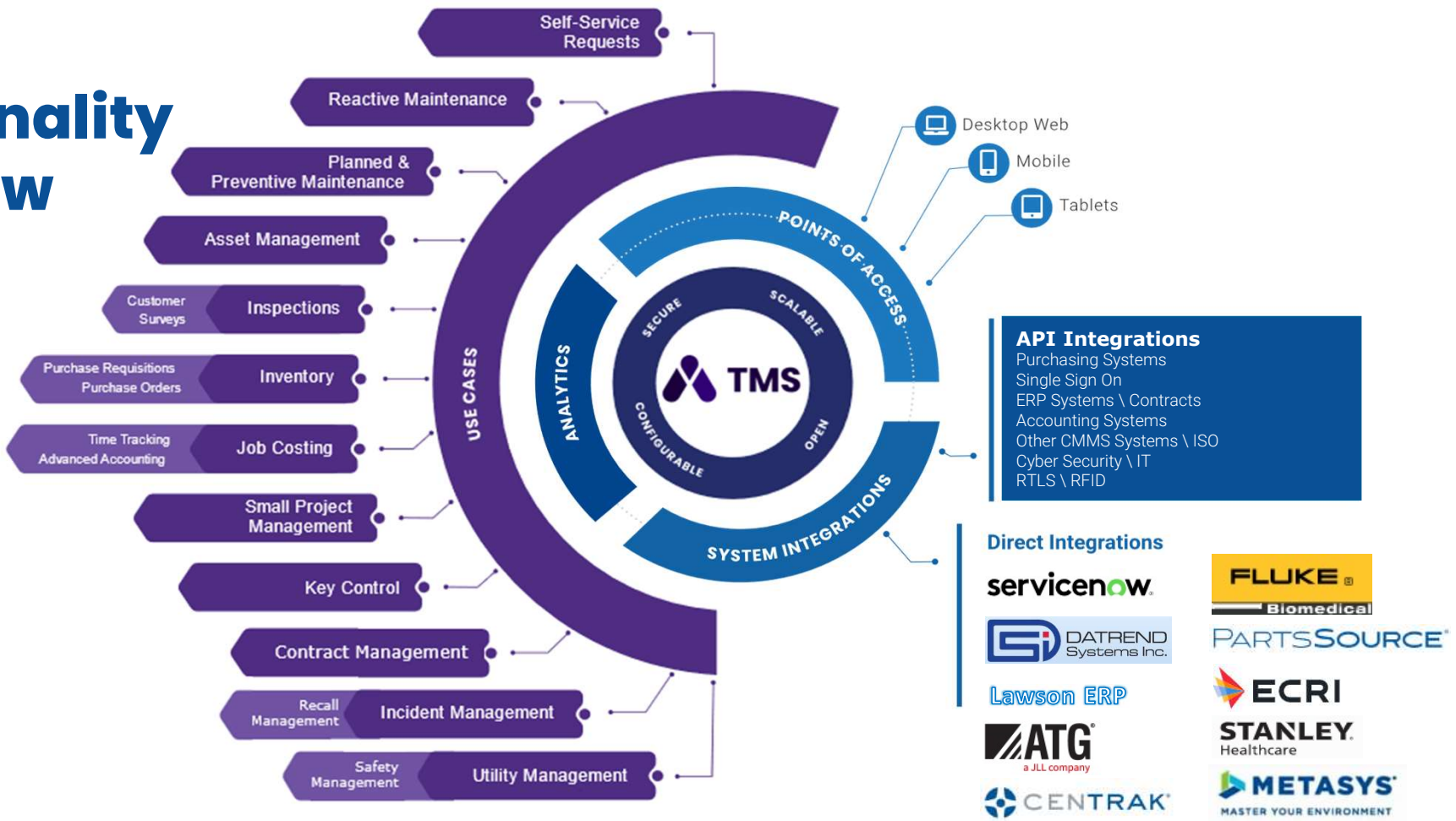
- OEM and Medical Device Testing Platform integrations
- Condition based monitoring through IoT platform (e.g BMS data)
- Equipment, manufacturer, and model driven workflow functionality

The screenshot displays the 'Work orders' section of the Accruent TMS interface. At the top, there is a search bar and filter options for Type, Skill code, Location, and Status. The work orders are categorized into three groups: Unassigned (100), Assigned (20), and In progress (2). Each category contains a grid of work order cards for 'Work order 15391'. The cards are color-coded: purple for Unassigned, orange for Assigned, and green for In progress. Each card shows a table with the following data:

Date available	Type	Description	Location	Location description	Asset
06/20/2022	Preventative maintenance	Q-Air conditioner	Engineering-North West	Engineering-North West	AC- 502
Asset description	Manufacturer	Model	Serial number		
AC Unit	Carrier	C4321	987654321		

The interface also includes a sidebar with navigation icons and a footer with the Accruent logo, version v4.10, and copyright information: © 2023 Accruent All Rights Reserved. Privacy Policy.

TMS Functionality Overview





Data Insights

BENEFITS

...IMPROVE YOUR DATA

...PRIORITIZE EQUIPMENT REPLACEMENT

...SELECT THE BEST EQUIPMENT



ACCRUENT HEALTHCARE – BIG DATA TEAM

Our team analyzed data from...



300+ HOSPITALS SYSTEMS



12M+ ASSET RECORDS



216M+ WORK ORDERS

WE HELP YOU IMPROVE YOUR DATA

Your Medical Device Asset Inventory



Auto-matched to thousands of similar models across Accruent's platforms

Data Standardization Report

- Your Original Manufacturer, Model, and Category Names
- Standard Manufacturer, Model, and Category Names


Data Enrichment Report

- Your Asset ID to tie back to your CMMS
- Missing Cost data
- Missing Useful Life data
- Recommended Adjustments for Wildly Inaccurate Install and Retired Dates

DATA STANDARDIZATION REPORT

MANUFACTURER	STANDARD MANUFACTURER	MODEL	STANDARD MODEL	CATEGORY	STANDARD CATE	POSSIB	COUNT
STRYKER MEDICAL CORP.	STRYKER	1115	PRIME SERIES STRETCHER (1105 1115 1125 GLIDEAW STRETCHERS	BED, ELECTRIC		6	175
STRYKER MEDICAL CORP.	STRYKER	1105	PRIME SERIES STRETCHER (1105 1115 1125 GLIDEAW STRETCHERS	BED, ELECTRIC		6	128
STRYKER MEDICAL CORP.	STRYKER	1501	PRIME SERIES STRETCHER (1105 1115 1125 GLIDEAW STRETCHERS	BED, ELECTRIC		6	68
STRYKER MEDICAL CORP.	STRYKER	1115E	PRIME SERIES STRETCHER (1105 1115 1125 GLIDEAW STRETCHERS	BED, ELECTRIC		6	21
STRYKER MEDICAL CORP.	STRYKER	1105 PRIME	PRIME SERIES STRETCHER (1105 1115 1125 GLIDEAW STRETCHERS	BED, ELECTRIC		6	12
STRYKER MEDICAL CORP.	STRYKER	SPR ISOFLEX	PRIME SERIES STRETCHER (1105 1115 1125 GLIDEAW AIR PUMP	BED, ELECTRIC		6	4
STRYKER MEDICAL CORP.	STRYKER	1125	PRIME SERIES STRETCHER (1105 1115 1125 GLIDEAW STRETCHERS	BED, ELECTRIC		6	3
ABBOTT LABORATORIES	ABBOTT	I-STAT	I-STAT 1 300 SERIES MN300 300G, 300-G, 300W WIRE BLOOD GAS/PH ANALYZER, BLOOD	ANALYZER, BLOOD		5	389
ABBOTT LABORATORIES	ABBOTT	300	I-STAT 1 300 SERIES MN300 300G, 300-G, 300W WIRE ANALYZERS	ANALYZER, BLOOD		5	333
ABBOTT LABORATORIES	ABBOTT	MN300	I-STAT 1 300 SERIES MN300 300G, 300-G, 300W WIRE POINT OF CARE BLOOD ANALYZER, BLOOD	ANALYZER, BLOOD		5	70
ABBOTT LABORATORIES	ABBOTT	ISTAT	I-STAT 1 300 SERIES MN300 300G, 300-G, 300W WIRE POINT OF CARE BLOOD ANALYZER, BLOOD	ANALYZER, BLOOD		5	54
ABBOTT LABORATORIES	ABBOTT	ISTAT 300 SERIES	I-STAT 1 300 SERIES MN300 300G, 300-G, 300W WIRE BLOOD GAS/PH ANALYZER, BLOOD	ANALYZER, BLOOD		5	3
ABBOTT LABORATORIES	ABBOTT	200	I-STAT 1 300 SERIES MN300 300G, 300-G, 300W WIRE ANALYZERS	ANALYZER, BLOOD		5	1
HILL-ROM COMPANY INC	HILL-ROM	P3200CH	VERSACARE P3200	BEDS, ELECTRIC	BED, ELECTRIC	5	150
HILL-ROM COMPANY INC	HILL-ROM	P3200J	VERSACARE P3200	BEDS, ELECTRIC	BED, ELECTRIC	5	104
HILL-ROM COMPANY INC	HILL-ROM	P3200H	VERSACARE P3200	BEDS, ELECTRIC	BED, ELECTRIC	5	47
HILL-ROM COMPANY INC	HILL-ROM	P3200B	VERSACARE P3200	BEDS, ELECTRIC	BED, ELECTRIC	5	26
HILL-ROM COMPANY INC	HILL-ROM	P3200D	VERSACARE P3200	BEDS, ELECTRIC	BED, ELECTRIC	5	12
HILL-ROM COMPANY INC	HILL-ROM	P3200E	VERSACARE P3200	BEDS, ELECTRIC	BED, ELECTRIC	5	3
MIDMARK CORPORATION	MIDMARK CORPORATION RITTER	104	100/104 SERIES	TABLE-EXAM	TABLE, EXAMINATIC	5	261
MIDMARK CORPORATION	MIDMARK CORPORATION RITTER	10412297	100/104 SERIES	TABLE-EXAM	TABLE, EXAMINATIC	5	127
RITTER~CH	MIDMARK CORPORATION RITTER	104~CH	100/104 SERIES	TABLE, EXAM	TABLE, EXAMINATIC	5	61
MIDMARK CORPORATION	MIDMARK CORPORATION RITTER	100-023	100/104 SERIES	EXAM	TABLE, EXAMINATIC	5	48
MIDMARK CORPORATION	MIDMARK CORPORATION RITTER	100-037	100/104 SERIES	EXAM	TABLE, EXAMINATIC	5	15
MIDMARK CORPORATION	MIDMARK CORPORATION RITTER	100-005	100/104 SERIES	TABLE, EXAM	TABLE, EXAMINATIC	5	3

DATA ENRICHMENT REPORT



ASSETID	STATUS	MANUFACTURER	MODEL	PRICE	RECOMMEN	USEFUL	RECOM
1000113069	SERVICE CONTRACT-ALL SVC	INTUITIVE SURGICAL	PS3000	0 \$	1,200,960	7	8
1000104174	IN SERVICE	INTUITIVE SURGICAL	PS3000	0 \$	1,200,960	7	8
1000113067	SERVICE CONTRACT-ALL SVC	INTUITIVE SURGICAL	SS3000	0 \$	412,051	7	8
1000104171	IN SERVICE	INTUITIVE SURGICAL	SS3000	0 \$	412,051	7	8
1000104172	IN SERVICE	INTUITIVE SURGICAL	SS3000	0 \$	412,051	7	8
1000187385	IN SERVICE	Medtronic Inc	STEALTH S8 CamCart	0 \$	247,203	7	8
1000187388	IN SERVICE	Medtronic Inc	STEALTH S8 CamCart	0 \$	247,203	7	8
1000160249	SERVICE CONTRACT-ALL SVC	Medtronic Inc	STEALTH S8 CamCart	0 \$	247,203	7	8
1000187386	IN SERVICE	Medtronic Inc	STEALTH STATION S8	0 \$	247,203	7	8
1000187387	IN SERVICE	Medtronic Inc	STEALTH STATION S8	0 \$	247,203	7	8
1000160248	SERVICE CONTRACT-ALL SVC	Medtronic Inc	STEALTH STATION S8	0 \$	247,203	7	8
1000140869	IN SERVICE	Medtronic Inc	Stealth Stat TREON	0 \$	247,203	7	8
1000145369	IN SERVICE	GE MEDICAL SYSTEMS	VIVID 9	0 \$	229,708	6	7
1000055426	SERVICE CONTRACT-ALL SVC	SHIMADZU MEDICAL DIVI	GSC-2002L	0 \$	205,440	10	9
1000138560	IN SERVICE	ROCHE DIAGNOSTIC SYST	COBAS 6000	0 \$	204,766	7	9
1000182790	SERVICE CONTRACT-ALL SVC	ROCHE DIAGNOSTIC SYST	COBAS 6000	0 \$	204,766	7	9
1000142315	SERVICE CONTRACT-ALL SVC	ROCHE DIAGNOSTIC SYST	COBAS 6000	0 \$	204,766	7	9
1000142314	SERVICE CONTRACT-ALL SVC	ROCHE DIAGNOSTIC SYST	COBAS 6000	0 \$	204,766	7	9
1000137426	IN SERVICE	ROCHE DIAGNOSTIC SYST	COBAS 6000	0 \$	204,766	7	9
1000182791	SERVICE CONTRACT-ALL SVC	ROCHE DIAGNOSTIC SYST	COBAS 6000	0 \$	204,766	7	9
1000073729	NON-OWNED VENDOR SERVICED	ROCHE DIAGNOSTIC SYST	COBAS 6000	0 \$	204,766	7	9
1000073728	NON-OWNED VENDOR SERVICED	ROCHE DIAGNOSTIC SYST	COBAS 6000	\$	204,766	7	9
1000137425	IN SERVICE	ROCHE DIAGNOSTIC SYST	COBAS 6000	0 \$	204,766	7	9
1000143295	IN SERVICE	LEICA MICROSYSTEMS IN	F50	0 \$	185,473	7	10
1000145484	IN SERVICE	LEICA MICROSYSTEMS IN	M525 OH4 FL400	0 \$	185,473	7	10
1000159926	IN SERVICE	LEICA MICROSYSTEMS IN	M525 OH4 FL400	0 \$	185,473	7	10
1000158229	IN SERVICE	Philips Healthcare	EPIQ CVx3D	0 \$	174,160	7	5
1000186963	IN SERVICE	Philips Healthcare	EPIQ CVx3D	0 \$	174,160	7	5
1000063131	IN SERVICE	CARL ZEISS INCORPORAT	PENTERO	0 \$	170,424	7	8
1000054122	SERVICE CONTRACT-ALL SVC	CARL ZEISS INCORPORAT	PENTERO	0 \$	170,424	7	8



Q&A



THANK YOU



 [linkedin.com/company/accruent](https://www.linkedin.com/company/accruent)

 twitter.com/accruentllc

 [facebook.com/accruent](https://www.facebook.com/accruent)

 accruent.com/blog