

ördr

Memorial Hermann Best Practices

Visibility and Security of
Connected Devices

MEMORIAL[®]
HERMANN

Agenda

- **Introduction**
- **Memorial Hermann Security Challenges**
- **How Ordr Helps**
- **Deployment Details**
- **Future Use Cases**

Introduction – Ben Stock



Benjamin Stock is the Director of Healthcare Product Management at Ordr. Previously, Ben worked as the Director of Clinical Equipment Systems and Project Support at SSM Health St. Louis, MO. With more than 15 years of experience in healthcare technology management, his wealth of knowledge in the Clinical Engineering space allows him to be a wonderful advocate for Ordr healthcare customers. Ben is also a Certified Biomedical Equipment Technician (CBET).

Introduction – Umair Siddiqui



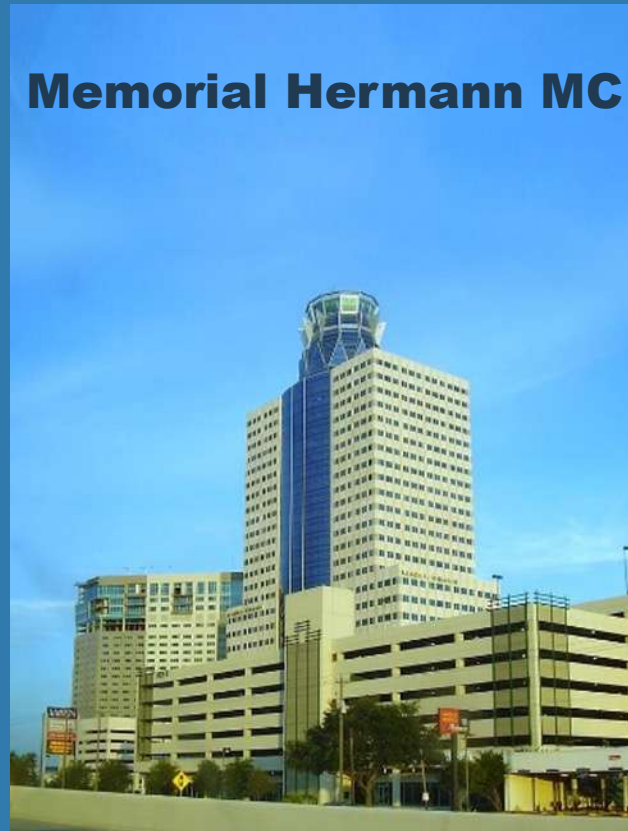
- **AVP Clinical Engineering & Asset Management: Memorial Hermann Health System, Houston TX**
- **Collaborative leader with 20+ years of experience in HTS**
- **Leads the Largest HTS program in Southeast Texas**
- **Responsible to manage of 100K+ owned & 20K+ rental equipment**
- **Strategic Planning, Program development, Safety Compliance, Executive Leadership, Operations Management**
- **Master of Science in Biomedical Engineering from University of Connecticut**
- **Master in Business Administration from University of Houston**

Introduction – Memorial Hermann Health System (MHHS)

Memorial Hermann Health System

- Located in Houston TX
- **114 years**
- **One of the largest** not-for-profit health systems in Southeast TX
- **6,100** affiliated physicians
- **29,000** employees
- **17** hospitals
- **270** care delivery sites
- One of the nation's busiest **Level I** trauma centers
- 100K total connected devices including 20K connected medical devices

Memorial Hermann MC

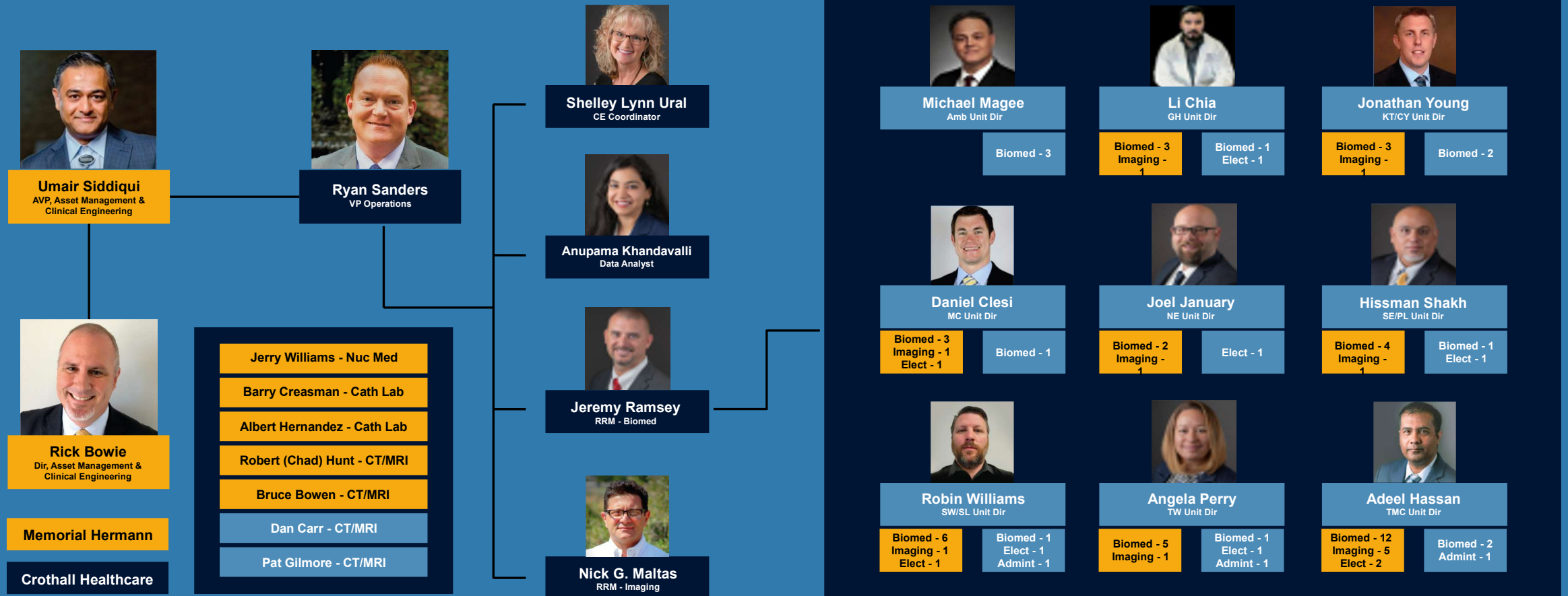


Memorial Hermann TMC



Biomed Team Structure

Clinical Engineering Services

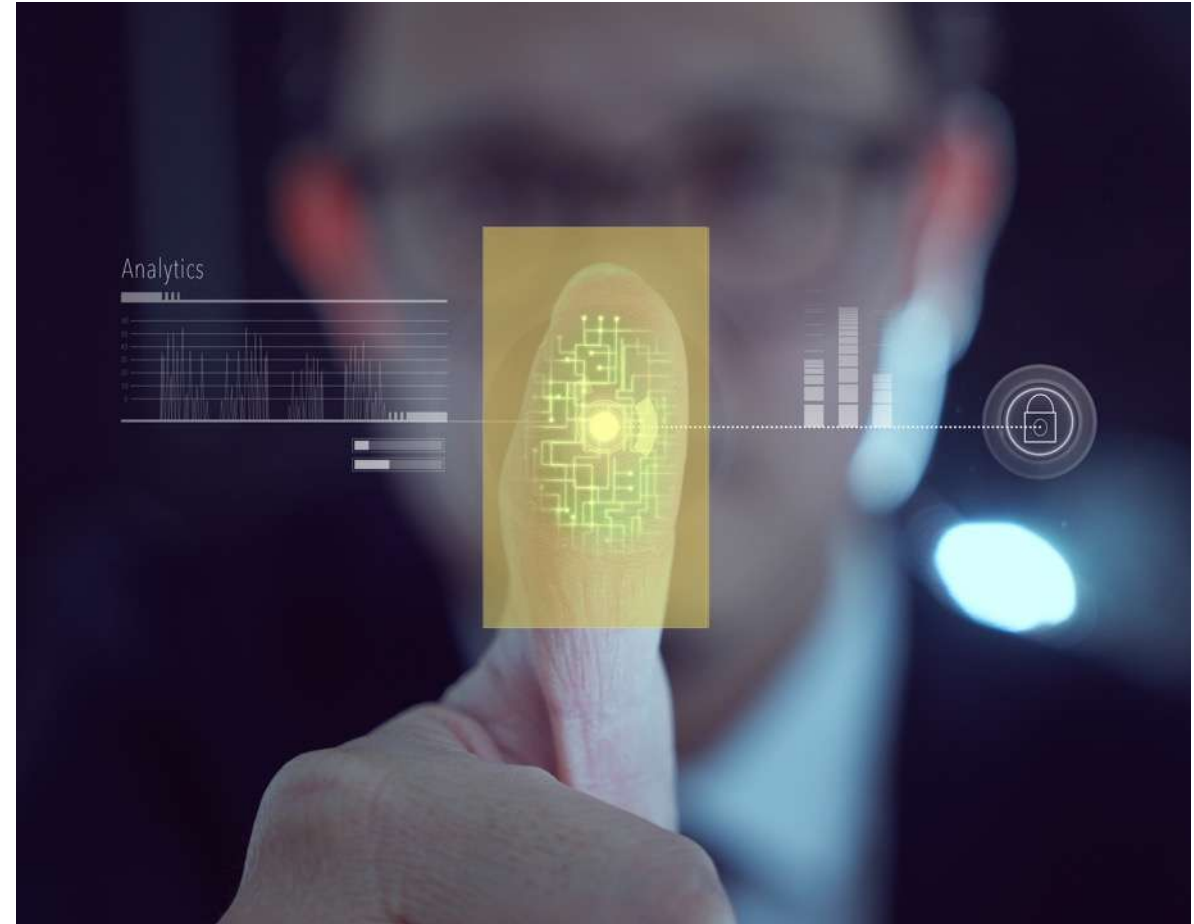


MHHS Cyber Security Team

MHHS Cyber Security Team

Technical Security Controls

- **Web Filter**
- **Email Filter**
- **EDR**
- **SIEM**
- **Firewalls**
- **Remote Access**
- **Application Whitelisting**
- **Incident Response**
- **Vulnerability Management**
- **Medical Device Security Monitoring -
Ordr**



MHHS Security Challenges



Cyber Security Needs

Visibility of East/West traffic

- **Inter-campus traffic can be challenging**
- **Identification of devices**
- **What is it**
- **Where is it**
- **Is it healthy**
- **Is it's behaving**



Biomed/Clinical Engineering Needs

Genesis for **Oru** at Memorial Hermann

- **Biomed needed visibility into device inventory**
 - **What is it**
 - **Where is it**
 - **What is it doing (how is it being utilized)**

How Ordr Helps – Device Insights



Traffic Visibility

- See East/West flows at a campus



Vulnerability Information

- Identify devices needing patches



Device Classification

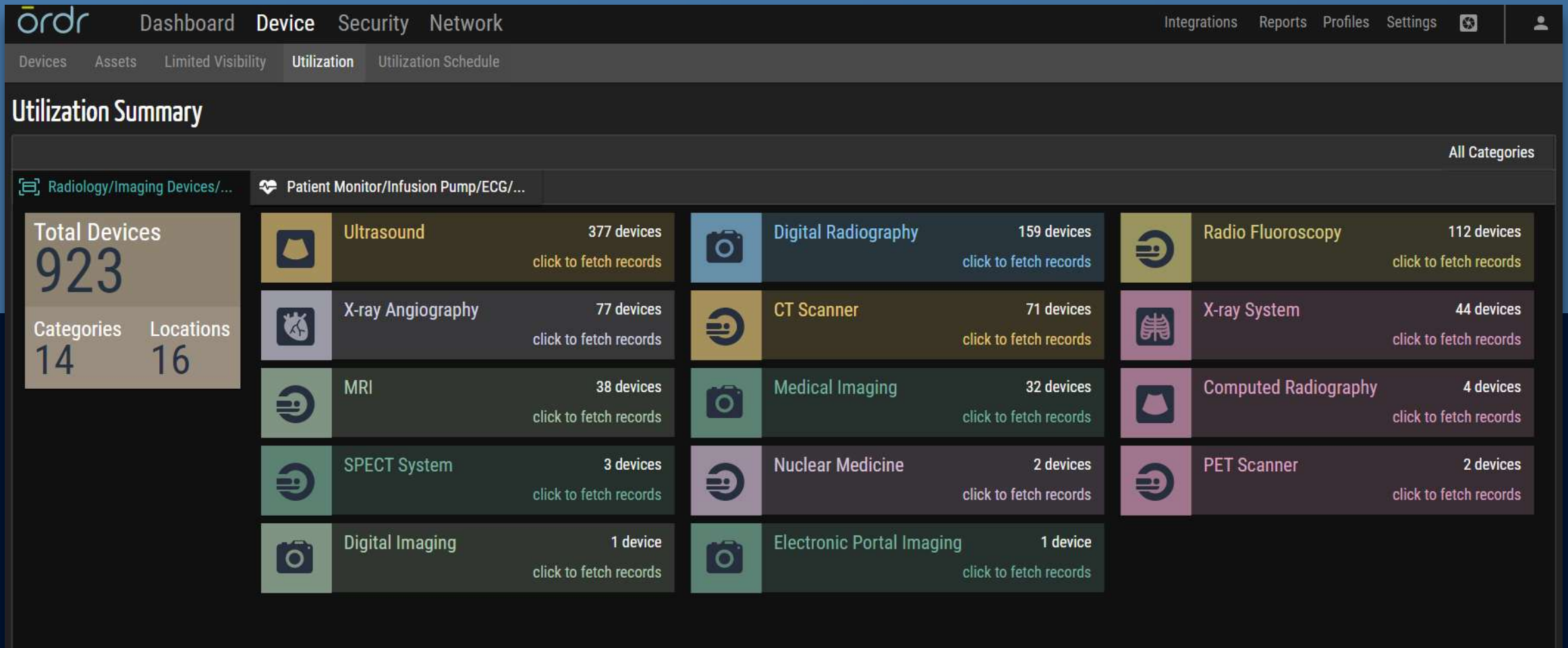
- Workstation (laptops & desktops)
 - OS
 - Manufacturer
 - Model
 - Serial
 - Mac Address
- Office devices (IP phone, printers)
- Facility devices (UPS, cameras)
- IoT devices (more cameras, pneumatic tube systems)
- Medical devices (MedStation systems, ultrasound, infusion pumps, Imaging modalities)



Behavioral Violations

- Provide context of normal device traffic

Device Utilization Summary



Identify MRI Devices With Over/Under Utilization

ordr Dashboard Device Security Network Integrations Reports Profiles Settings

Devices Assets Limited Visibility **Utilization** Utilization Schedule

Utilization of MRI

Summary Usage Compare & Contrast 2023/2/12 - 3/14 (31 days)

Search currently visible fields ... Filter Saved Queries

	All Devices	Underutilized	Normal	Overutilized	Un-Tracked	Records loaded
	38	36 95%	2 5%	0 0%	0	322

Assigned Color	No.	Device Mac	Device Label	Location	Profile	Images	Schedule	Utilization	Actions
	1	00:0A:F7:7B:84:2D	BLEDMRI1	Pearland Hospital Pearland Hosp	GE-Signa HDxt-MRI	37469	Default: 24x7	↓ 19% (Under)	
	2	00:10:18:B1:07:1F	GEMS4567	Texas Medical Center Texas Med	GE-Signa HDxt-MRI	35	7a - 11P (Mon - Sat)	↓ 4% (Under)	
	3	00:14:5E:47:4D:06	MR01KREH	Katy Rehabilitation Hospital Katy	GE-Signa Excite-MRI	28911	Default: 24x7	↓ 18% (Under)	
	4	00:1B:21:41:17:F0	TWMRTWMR	The Woodlands Medical Center T	GE-Discovery MR450-MRI	273	Default: 24x7	↓ 7% (Under)	
	5	00:25:B3:28:02:54	RN_EMRI_T3	Northeast Hospital Northeast Hc	Philips-Achieva-MRI	674	Default: 24x7	↓ 5% (Under)	
	6	10:E7:C6:3F:BC:16	KMMRC1	Katy Hospital Katy Hospital	Siemens-Altea-MRI	613	Default: 24x7	↓ 2% (Under)	
	7	18:60:24:93:8C:A0	OP_MOBILEMR3	Unspecified Unspecified	Siemens-Magnetom Espree-MRI	7152	Default: 24x7	↓ 9% (Under)	
	8	18:60:24:93:9A:E4	MCPHILIPS	Texas Medical Center Texas Med	Philips-Achieva-MRI	0	Default: 24x7	↓ 0% (Under)	
	9	18:60:24:93:9A:F5	RMMRI01	Memorial City Medical Center M	Philips-Ingenua-MRI	0	Default: 24x7	↓ 0% (Under)	
	10	18:60:24:9F:82:17	R90PIDKWMRI	Unspecified Unspecified	Philips-Ingenua-MRI	1730	Default: 24x7	↓ 6% (Under)	
	11	18:60:24:A2:80:15	MERGE_ECHO_SCU	The Woodlands Medical Center T	Siemens-Magnetom Skyra-MRI	124	Default: 24x7	↓ 4% (Under)	

Show Devices With 24/7 Utilization Schedule

ordr Dashboard Device Security Network Reports Profiles Settings

Devices Assets Utilization Utilization Schedule

Apply Cancel Default

Device Risk >
 Region/Location >
 Connectivity >
 Traffic >
 Last Seen >
 Guest vs Corp >
 Access Method >
 Category >
 OS >
 Business Function 1 >
 Business Function 2 >
 Business Function 3 >

Device List

Total 9454 Devices match 1 filter

Search currently visible fields ... Filter Saved Queries

Clear all criteria Filter of "Default: 24x7" schedule ...

Default View Custom Views

No.	Risk	Device Name	IP Address	Device Category	Manufacturer	Model Name/No.	OS Type	Serial No.	Mac Address
13	● medium	HHPDMIRA13	10.170.50.139	X-ray System	Siemens	Mobilett Mira Max	Windows 7	1187	00:1B:1B:CB:3
14	● medium	HHPDMIRA11	10.170.50.137	X-ray System	Siemens	Mobilett Mira Max	Windows 7	1189	00:1B:1B:CB:3
15	● medium	HHPD6	10.170.50.241	X-ray System	Siemens	Mobilett Mira Max		1354	00:1B:1B:CB:3
16	● medium	HHPDMIRA12	10.170.50.138	X-ray System	Siemens	Mobilett Mira Max	Windows 7	1186	00:1B:1B:CB:3
17	● medium	CYSI2273	10.68.186.123	X-ray System	Siemens	Mobilett Mira Max		2273	00:1B:1B:CD:5
18	● normal	CYSI2260		X-ray System	Siemens	Mobilett Mira Max		2260	00:1B:1B:CD:5
19	● medium	CYSI2277	10.68.186.124	X-ray System	Siemens	Mobilett Mira Max		2277	00:1B:1B:CD:5
20	● normal	R6PORT1		X-ray System	Siemens	Mobilett Mira Max		1499	00:1B:1B:CE:E
21	● medium	HHPDMIRA3	10.170.50.133	X-ray System	Siemens	Mobilett Mira Max	Windows 7	1372	00:1B:1B:CF:3
22	● medium	HHPDMIRA16	10.170.50.62	X-ray System	Siemens	Mobilett Mira Max		1352	00:1B:1B:CF:7
23	● medium	NEGEOPTIMAX2	10.60.186.225	X-ray System	GE	Optima XR220			04:F0:21:0C:2
24	● medium	RZ_FUJIRAD027		X-ray System	GE	Optima XR220			04:F0:21:0C:2
25	● medium	TWP10		X-ray System	GE	Optima XR220			04:F0:21:17:EI

How Ordr Helps - MDCSOC

Medical Device Compliance and Security Oversight Committee

Biomed/Clinical Engineering & Cyber Security are now meeting

- Monthly cadence
- Cross talk team actions relating to security events
- Validation of Inventory – CVEs, Win Patching, OS Verification, Recalls & Remediations
- Equipment Utilization Dashboard
- Imaging Equipment Planning & Replacement Analysis

Establish and enhance how we respond to incidents

- How do we Detect, Notify, Remediate

Measure and remediate medical device vulnerabilities in the environment

- What needs attention
- Who owns the remediation
- What is current state and are we making progress

How Ordr Helps – Threat detection

Detected a very real threat and allowed the combined teams to neutralize its impact



Unexpected traffic



Mapped to Medical Device Type



Mapped to facilities



Allowed for fast remediation and long term solution

MHHS – Ordr Deployment

Management Console (“Painless”):

- Ordr provided OVA
- Ordr support facilitated the configuration

Sensor Deployment (“Straight Forward”):

- Get the ports from Net Engineering
- Rack, connect the power, and span ports then verify in Ordr

Trouble shooting:

- If a sensors didn’t sync, a reboot generally solved the problem.
- Ordr sent the sensors pre-configured
 - Only by exception did IPs need to be changed because our network needs
- One instance where the sensor was showing the span ports were not connected but Ordr assisted and the issue was fixed quickly.

2
Sensors
spanning
29 campuses
100K
Observed
+ Devices
30K+
Medical Devices

Future Use Cases with Ordr

Integrations:



GE Healthcare

Monitoring devices and traffic on the Carescape network



Enrich device data for enhanced IT component



Infusion Pumps Utilization Dashboard



Utilization Dashboard for Lease Program

Questions?



Ben Stock
bstock@ordr.net
et
[https://](https://ordr.net/)
ordr.net/



Umair Siddiqui
Umair.Siddiqui@memorialhermann.org

Thank You!