

# How to Survive CMS Surveys

# Who is this guy?

- ▶ John Garrett
- ▶ Director Clinical Engineering Common Spirit Health.
- ▶ 24 years in servicing medical equipment.
- ▶ BS Health and Human Services Mgmt.
- ▶ MS in Psychology.
- ▶ Currently a Doctoral Student.
- ▶ Completed a full CMS survey with **zero** Clinical Engineering findings



# Let's talk about CMS

- ▶ Centers for Medicare & Medicaid Services (CMS)
- ▶ Part of the Department of Health & Human Services
- ▶ Determines if your hospital can be reimbursed by Medicare & Medicaid
- ▶ Grants “Deemed Status” to hospitals that meet CMS requirements
  - ▶ Deemed Status may be granted through Joint Commission, HFAP, or DNV
- ▶ A CMS survey team is made up of an interdisciplinary team
  - ▶ May have as many or as few members as needed to complete the planned survey
  - ▶ This will be made up of Doctors, Nurses, Facilities Mngrs, CE Mngrs, etc.

# The CMS survey

- ▶ Upon beginning survey there were 36 inspectors.
  - ▶ Many specialists. At one point there were 40+ on campus
  - ▶ Lab, Life safety/facilities, Nursing, Transplant,
- ▶ My days were 12 to 16 hour days.
- ▶ There are specific things the hospital needs in place to make the process smooth.
- ▶ There were a great number of trees killed for the successful completion of the survey.



# Set Your Expectations



- ▶ The Survey will go on as long as is needed.
  - ▶ The team may have a plan, but they will stay as long as they want.
  - ▶ If you have an immediate jeopardy (IJ) your survey will stop at that point. This is **Very BAD!**
- ▶ Information is king.
  - ▶ This is where all the trees are killed. Have a lot of printer paper **AND INK** on hand!
  - ▶ Assign team members that will simply provide requested information.
- ▶ Constant education.

# Recommendations

- ▶ Command Center
  - ▶ All information comes through the command center. Info is reviewed and verified prior to presentation to CMS
  - ▶ Manned from 1 hour prior to 1 hour post inspector schedule (May need to be 24 hour)
- ▶ Scribes
  - ▶ Walk with inspectors and records questions and requests.
  - ▶ Forwards all requests as soon as they are made.
- ▶ Dedicated space for CMS
- ▶ Communications plan



# Trends in our CMS survey

- ▶ Policies, policies, policies, & Documentation
  - ▶ Medical Equipment Management plan. (MEMP)
  - ▶ Alternative Equipment Maintenance (AEM) forms and documentation.
  - ▶ Job descriptions for in-house team members.
  - ▶ Competencies of in-house team and all vendors that touch equipment.
  - ▶ Proper documentation of all incoming inspections and retirements.
    - ▶ This includes removal of all Electronic Patient Health Information (EPHI) for HIPPA compliance.
  - ▶ Proper documentation of service.



# Trends in our CMS survey Pt. 2

- ▶ Infection control

- ▶ Rust.

- ▶ ANY rust is considered an infection control issue.
      - ▶ OR tables were a big focus. Including screws and base plates.
      - ▶ Equipment carts were another big rust issue.
    - ▶ Rust colored primer was reported as rust.

- ▶ Covers.

- ▶ Cracked covers were considered an infection control risk.
    - ▶ Covers that were “loose” were considered an infection control risk.



# Spoiler Alert !!!

- ▶ The best way to survive any survey is to design a service model that is formed based on the CMS guidelines. These are available online.
  - ▶ <https://www.cms.gov/Medicare/Provider-Enrollment-and-Certification/CertificationandCompliance/index.html>
  - ▶ Navigating this site could be a series of classes
- ▶ Education of staff is critical.
  - ▶ Staff need to understand how to document to CMS requirements
- ▶ Keep up with the trends.
  - ▶ Each year CMS focuses on different things. Often things that have changed.



**SPOILER  
ALERT**

# CMS codes to consider

- ▶ EC.01.01.01: The hospital plans activities to minimize risks in the environment of care
- ▶ EC.02.01.01: The hospital manages safety and security risks
- ▶ EC.02.01.03: The hospital prohibits smoking except in specific circumstances
- ▶ EC.02.02.01: The hospital manages risks related to hazardous material and waste
- ▶ EC.02.03.01: The hospital manages fire risks
- ▶ EC.02.03.03: The hospital conducts fire drills
- ▶ EC.02.03.05: The hospital maintains fire safety equipment and fire safety building features
- ▶ EC.02.04.01: The hospital manages medical equipment risks
- ▶ EC.02.04.03: The hospital inspects, tests and maintains medical equipment
- ▶ EC.02.05.01: The hospital manages risks associated with its utility systems
- ▶ EC.02.05.03: The hospital has a reliable emergency electrical power source
- ▶ EC.02.05.05: The hospital inspects, tests, and maintains utility systems
- ▶ EC.02.05.07: The hospital inspects, tests, and maintains emergency power systems
- ▶ EC.02.05.09: The hospital inspects, tests, and maintains medical gas and vacuum systems
- ▶ EC.02.06.01: The hospital establishes and maintains a safe, functional environment
- ▶ EC.02.06.05: The hospital manages its environment during demolition, renovation, or new construction to reduce risk to those in the organization

EC.03.01.01: Staff and licensed independent practitioners are familiar with their roles and responsibilities relative to the environment of care

EC.04.01.01: The hospital collects information to monitor conditions in the environment

EC.04.01.03: The hospital analyzes identified environment of care issues

EC.04.01.05: The hospital improves its environment of care

HR.01.02.01: The hospital "defines" staff qualifications

HR.01.02.05: The hospital "verifies" staff qualifications

HR.01.02.07: The hospital determines how staff function within the organization

HR.01.04.01: The hospital provides orientation to staff

HR.01.05.03: Staff participate in ongoing education and training

HR.01.06.01: Staff are competent to perform their responsibilities

HR.01.07.01: The hospital evaluates staff performance

NPSG.06.1.01: Improve the safety of clinical alarm systems

# Key points for your MEMP

- ▶ Cover Inspection and testing of equipment.
  - ▶ Include Incoming inspections, PMs, and AEM
  - ▶ May break out specifics on Radiology, Lab, Lasers, etc.
- ▶ Non-Hospital owned equipment
  - ▶ This includes Doctor owned and rentals.
  - ▶ You should cover requirements for items to be used. This included incoming inspections every time they enter the hospital.
- ▶ Patient owned equipment
  - ▶ Will you allow patient owned equipment?
  - ▶ Infection control concerns and service history?



# Key points for your MEMP Part 2

- ▶ Responsibilities
  - ▶ Operators responsibilities.
    - ▶ Making equipment available for service and PMs
    - ▶ Report damaged or failing equipment.
    - ▶ Operator maintenance and operations.
  - ▶ Clinical Engineering is responsibilities.
    - ▶ PM schedule
    - ▶ Repairing equipment
    - ▶ Incoming inspections, safety testing ... etc.
- ▶ Program review
  - ▶ How is the program success measured?
  - ▶ Who is the program review reported to?



# The role of Clinical Engineering

- ▶ Know your Policies and Procedures.
  - ▶ Be able to speak to MEMP top to bottom.
  - ▶ Know the hospital policies and procedures that apply outside of CE.
- ▶ Remain calm.
  - ▶ If the team that fixes things panics, everyone panics. Panic is contagious.
- ▶ Provide support.
  - ▶ Supply requested information immediately.
  - ▶ CE is all over the hospital. Keep eyes open and head on a swivel. Report issues.
- ▶ Remain calm.
  - ▶ Technically this is the same as a previous point, but it is that important!!!



# Remember what is important

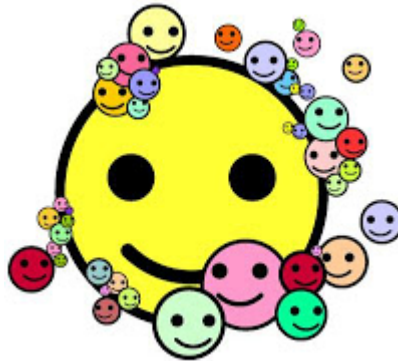


- ▶ Patient care is your primary concern ALWAYS!
  - ▶ In the stress and chaos that can be an inspection, put the patient first!
  - ▶ If this is the focus, it will show during the survey.
- ▶ Take care of each other.
  - ▶ I found two different nurse managers standing in a corner crying during the survey. Lack of sleep, extreme stress, and normal daily challenges build up.
  - ▶ This is a team sport and it can only be completed properly by a team.
- ▶ Do the right thing every time.
  - ▶ Every time.

# Final comment

► Remember:

This is a team sport and it can only be completed properly by a team.



# Questions?

